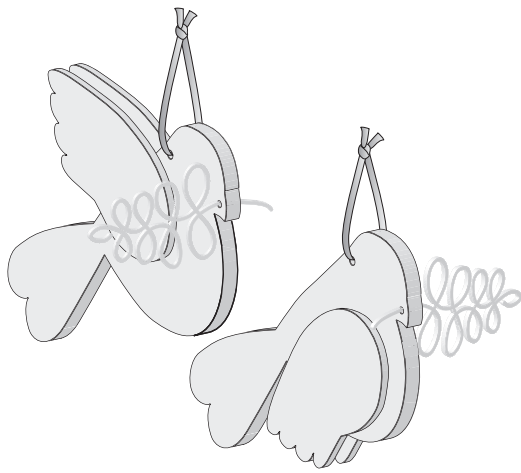


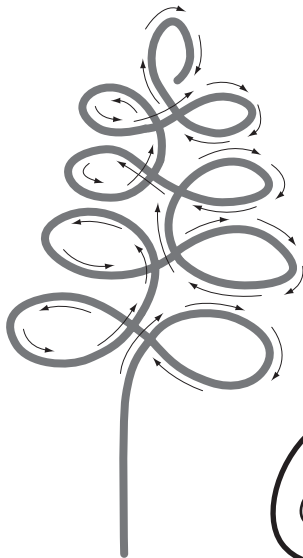
## PEACE DOVE ORNAMENTS



**Assembled View**

**Delta Acrylic  
Paints used  
on this pattern**

ITEM#	COLOR
2002	Antique Gold
2062	Maple Sugar
2602	Kim Gold
2603	Silver



**Branch**

(Cut two 16" lengths of 18 gauge Wire (Bend Wire into approx. shape))

Exclusive patterns provided by

**The Winfield Collection**  
8350 Silver Lake Rd.  
Linden, MI 48451

1-800-946-3435

[www.thewinfieldcollection.com](http://www.thewinfieldcollection.com)

Copyright 2007

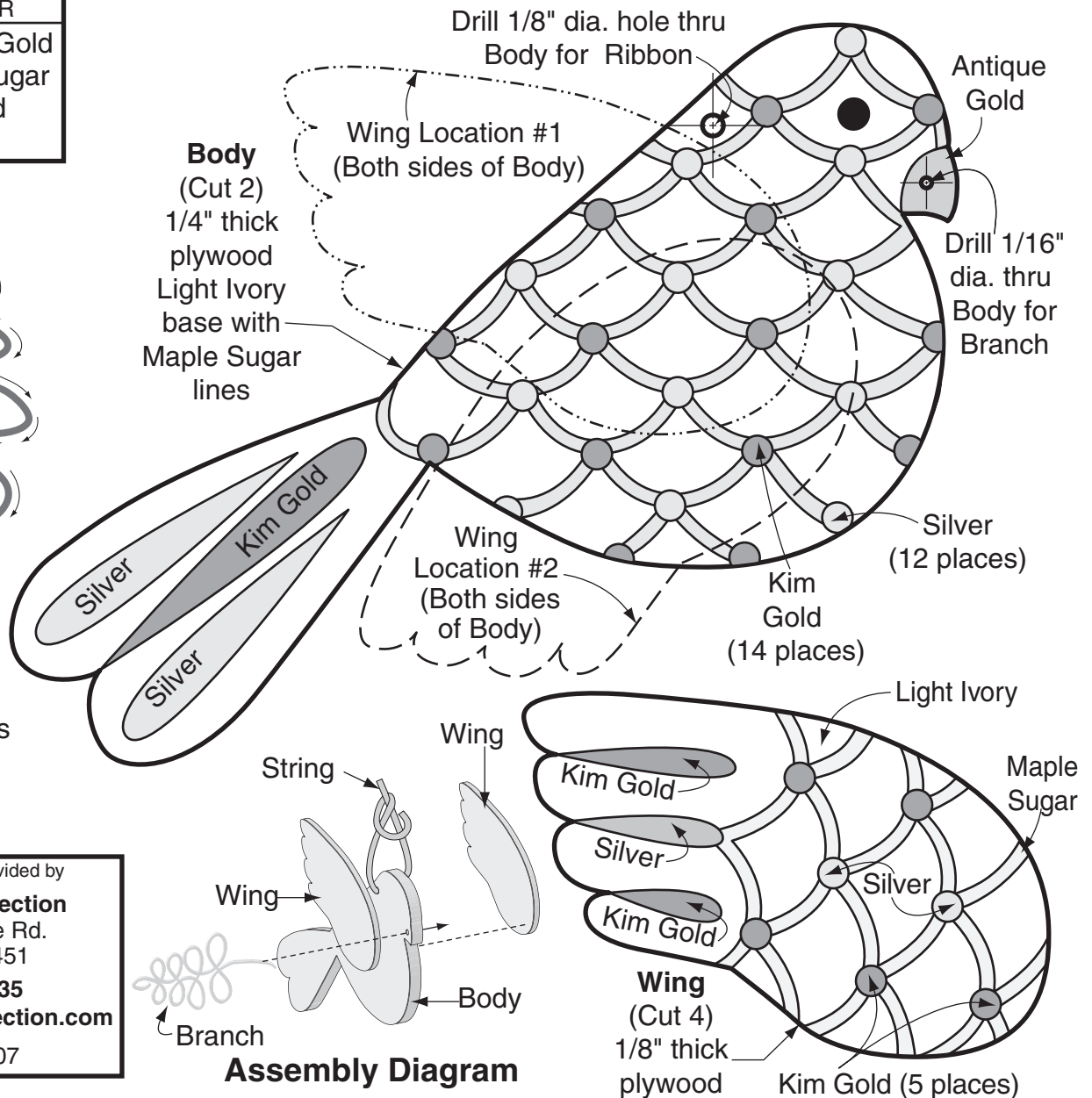
**CUTTING:** Cover an appropriate size area of wood with Transfer Paper (#CARB). Lay the pattern over the transfer paper and transfer each pieces cut lines onto the appropriate thickness of wood by simply tracing with a pen, pencil or stylus (#STY). Cut two Bodies from 1/4" thick plywood\* (#FPLY4). Cut four Wings from 1/8" thick plywood\* (#FPLY812). Cut two 16" lengths of 18 gauge wire for Branch. Drill all holes as noted. Fill voids and defects in wood using wood filler. Sand wood filler (#WF8) and all surfaces to desired smoothness. Bend each wire into approximate Branch shape shown.

**ASSEMBLY:** (Refer to Assembly Diagram.) Locate and glue (#GLUETB3) Wing onto each side of Body in Wing location #1. Repeat with remaining Body and Wings for Wing location #2.

**PAINTING:** Use Delta brand (or equal quality) acrylic craft paint to paint the different areas as noted or colors of your choice.

**FINISHING:** For maximum protection coat your project with at least two coats of our durable project sealer (#POLYQT). Insert and glue Branch into drill hole as noted in Body, leaving about 1" length of wire on opposite side, cut off any remaining wire. Thread appropriate length of string thru drill hole noted in Body, tying ends of string into knot. Hang ornament from string to display.

( ) = Available from The Winfield Collection, 1-800-946-3435



**Assembly Diagram**