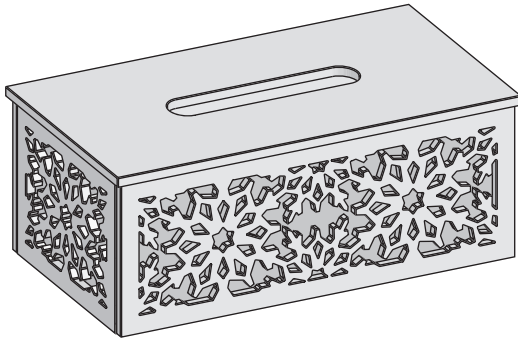
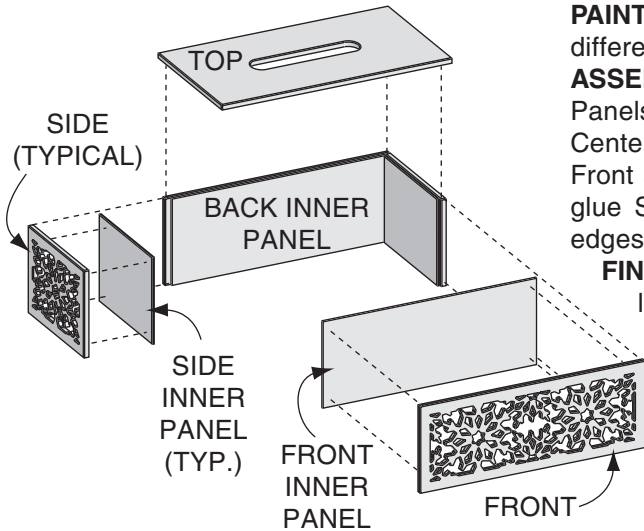


SNOWFLAKE TISSUE BOX COVER



ASSEMBLED VIEW



ASSEMBLY DIAGRAM

This pattern is presented in multiple pieces due to space limitations. Cut out and tape these pieces together at the Match Lines before using (see Match Line Assembly Diagram on page 3).

CUTTING: Cover an appropriate size area of wood with Transfer Paper (#CARB). Lay the pattern over the transfer paper and transfer each pieces cut lines onto the appropriate thickness of wood by simply tracing with a pen, pencil or stylus (#STY). Cut Top, Sides, Front & Back from 1/4" thick wood, the sizes noted. Cut Front, Back and Side Inner Panels from 1/8" thick wood. Using a drill, make a starter hole within each inside area to be cut out. Place blade of jigsaw in hole, cut over to line then around entire area to remove plywood. Fill voids and defects in wood using wood filler. Sand wood filler (#WF8) and all surfaces to desired smoothness.

PAINTING: Use Delta brand (or equal quality) acrylic craft paint to paint the different areas as noted or colors of your choice.

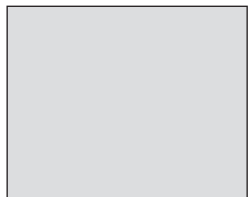
ASSEMBLY: (See ASSEMBLY DIAGRAM.) Center and glue Side Inner Panels to backside of Sides as shown, keeping top and bottom edges flush. Center and glue (#GLUETB3) Front and Back Inner Panels to backsides of Front and Back as shown, keeping top and bottom edges flush. Locate and glue Side Assemblies between Front & Back Assemblies keeping outside edges flush. Center and glue Top onto Assembly as shown.

FINISHING: For maximum protection coat each piece of your project with at least two coats of our durable project sealer (#POLYQT). Set over tissue box on counter or table top to display.

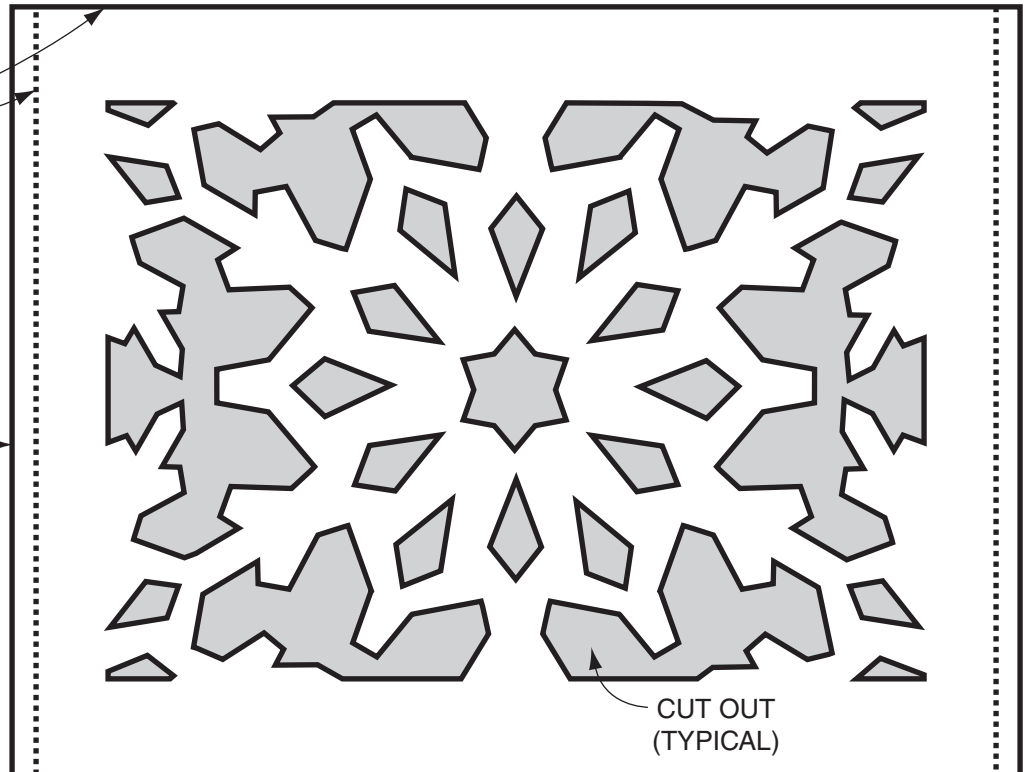
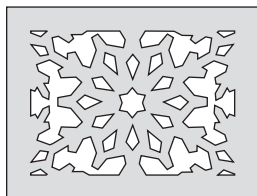
() = Available from The Winfield Collection, 1-800-946-3435

Exclusive patterns provided by
The Winfield Collection
 8350 Silver Lake Rd., Linden, MI 48451
1-800-946-3435
www.thewinfieldcollection.com
 Copyright 2007

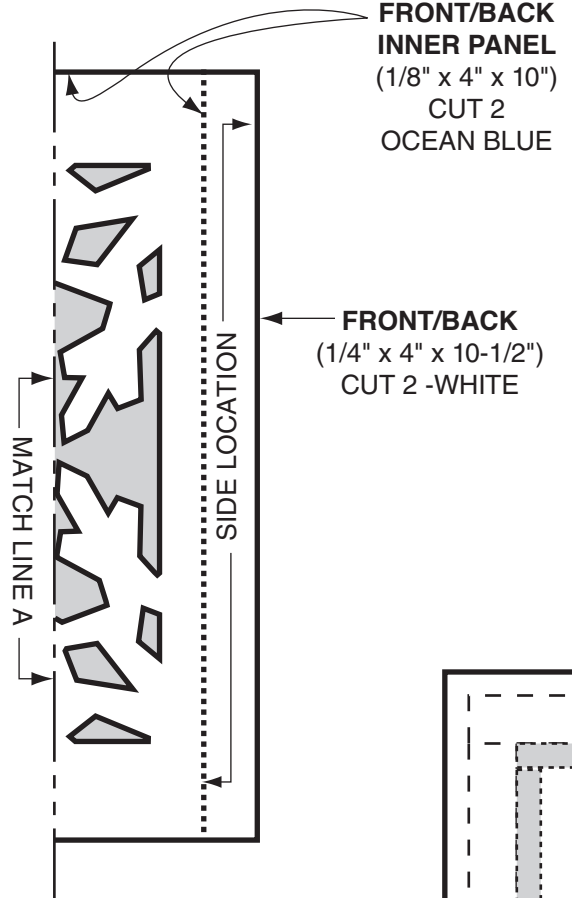
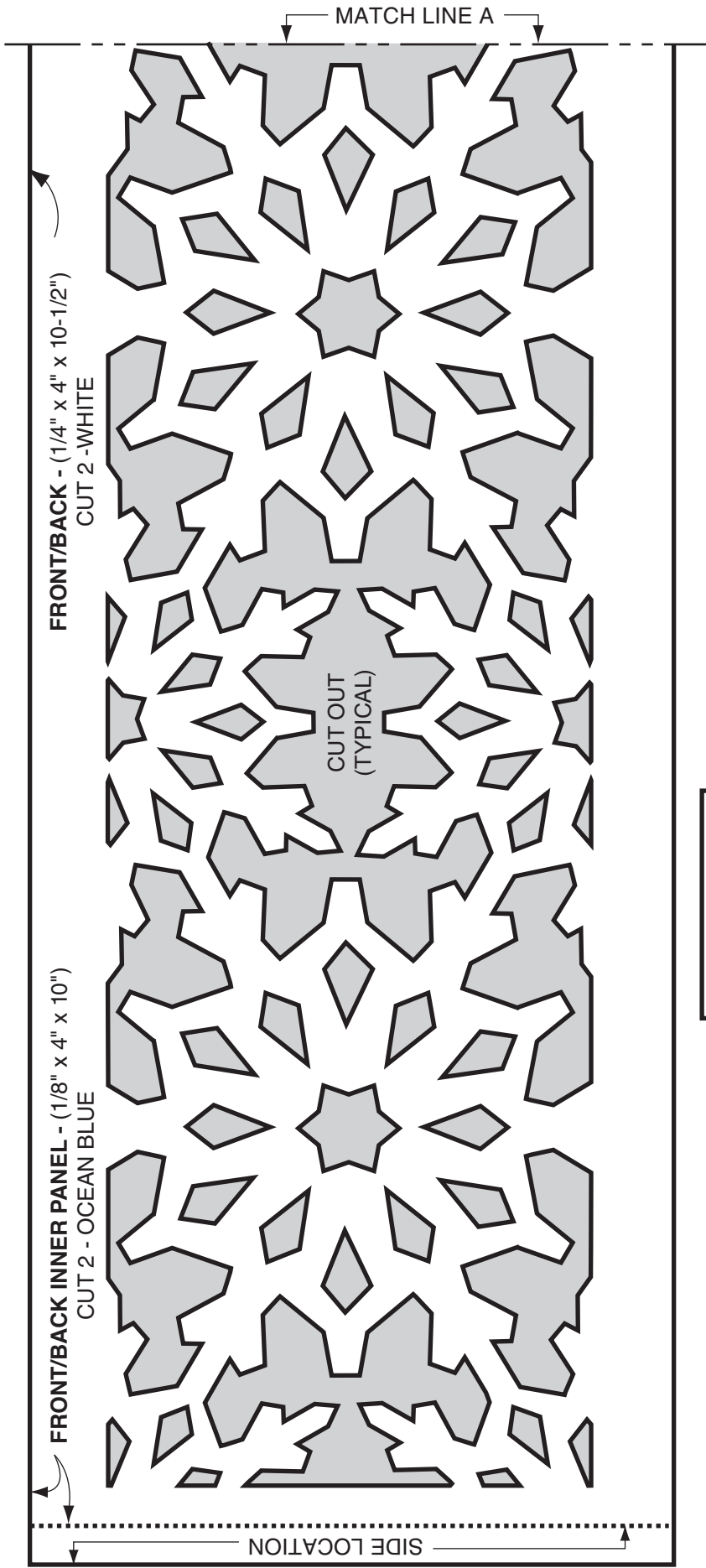
SIDE INNER PANEL
 (1/8" x 4" x 5")
 Cut 2 - Ocean Blue



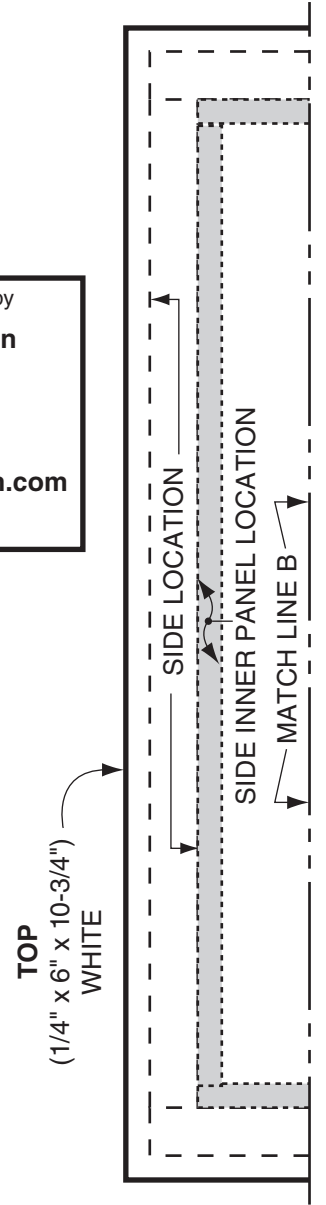
SIDE
 (1/4" x 4" x 5-1/4")
 Cut 2 - Ocean Blue

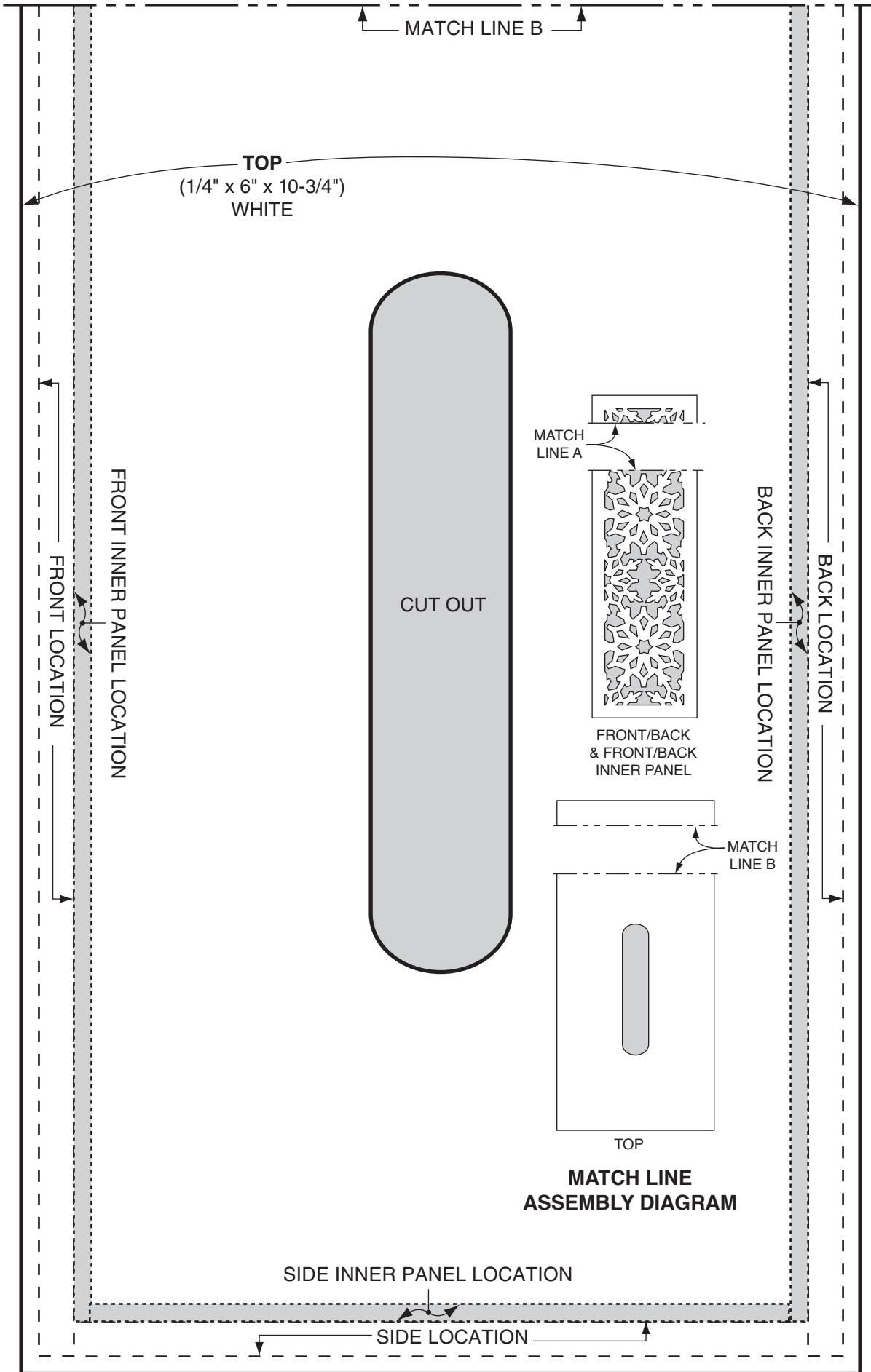


CUT OUT
 (TYPICAL)



Exclusive patterns provided by
The Winfield Collection
 8350 Silver Lake Rd.
 Linden, MI 48451
 1-800-946-3435
www.thewinfieldcollection.com
 Copyright 2007





Exclusive patterns provided by
The Winfield Collection
 8350 Silver Lake Rd., Linden, MI 48451
1-800-946-3435
www.thewinfieldcollection.com
 Copyright 2007