



"HIS & HERS" PIGGY BANK

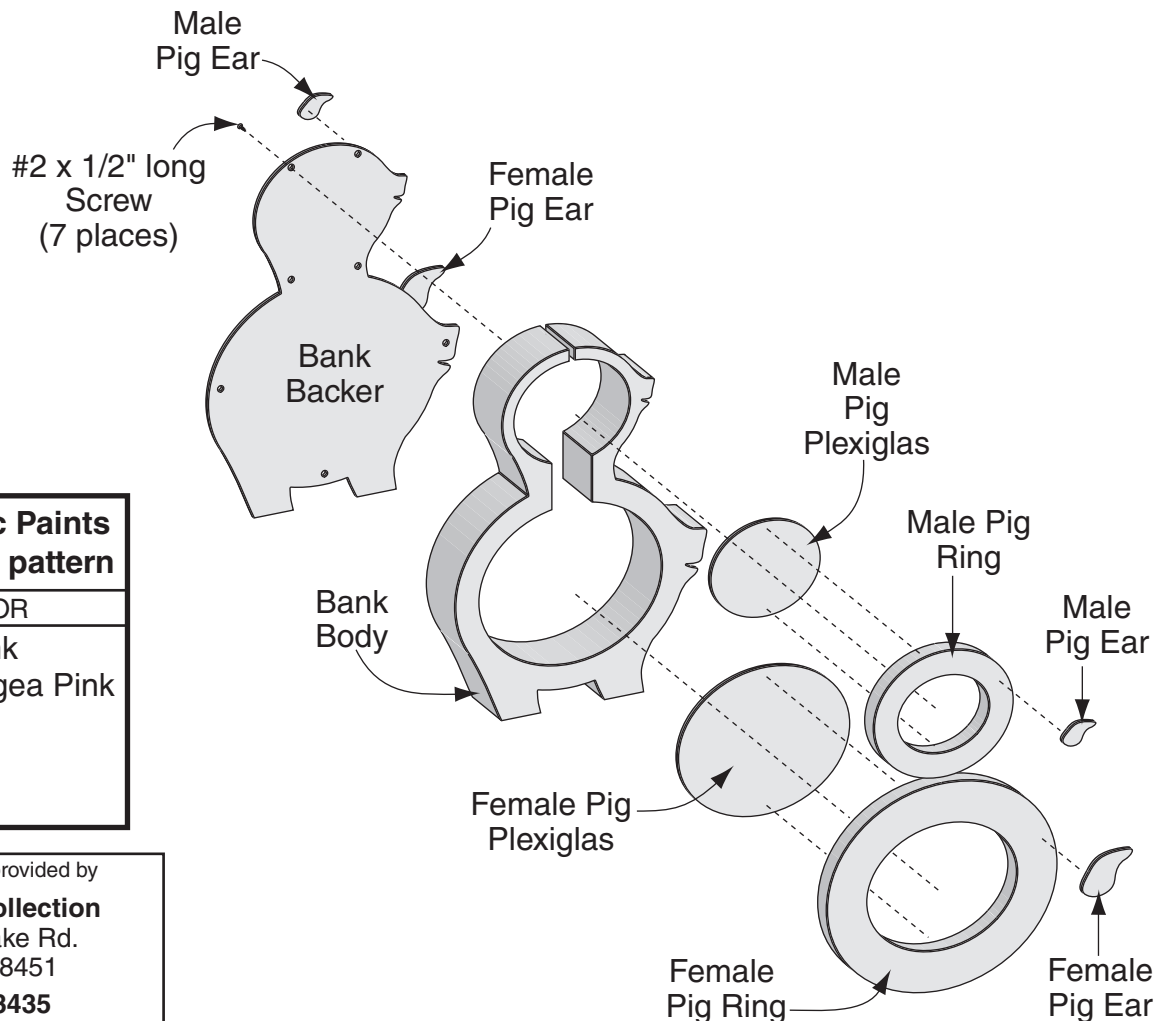
CUTTING: Cover an appropriate size area of wood with Transfer Paper (#CARB). Lay the pattern over the transfer paper and transfer each pieces cut lines onto the appropriate thickness of wood by simply tracing with a pen, pencil or stylus (#STY). Cut Bank Body from 1-1/2" thick wood. Cut Female Pig Ring from 1/2" thick wood. Cut Male Pig Ring from 1/4" thick wood. Cut Bank Backer, Male and Female Pig Ears from 5/32" thick wood. Cut Male and Female Pig Plexiglas from 1/8" thick clear Plexiglas* (#PLEXCL2). Drill holes as noted. Fill voids and defects in wood using wood filler. Sand wood filler (#WF8) and all surfaces to desired smoothness.

PAINTING: Use Delta brand (or equal quality) acrylic craft paint to paint the different areas as noted or colors of your choice. Paint all inside Bank surfaces Lisa Pink.

ASSEMBLY: Center and glue Male Pig Plexiglas to backside of Male Pig Ring using E6000 Adhesive* (#GLUE6). Center and glue Female Pig Plexiglas to backside of Female Pig Ring using E6000 Adhesive* (#GLUE6). Locate and glue Male and Female Ring Assemblies to locations shown on Bank Body. Locate and glue Male and Female Pig Ears to locations shown on Bank Backer and Bank Body. Attach Bank Backer to Assembly using (7) #2 x 1/2" long screws.

FINISHING: For maximum protection coat your project with at least two coats of our durable project sealer (#POLYQT). Place in desired location for a unique and fun way to store you spare change.

() = Available from The Winfield Collection, 1-800-946-3435



Assembly Diagram

Delta Acrylic Paints used on this pattern

ITEM#	COLOR
2084	Lisa Pink
2449	Hydrangea Pink
2481	Fuchsia
2505	White
2506	Black

Exclusive patterns provided by

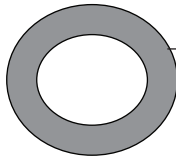
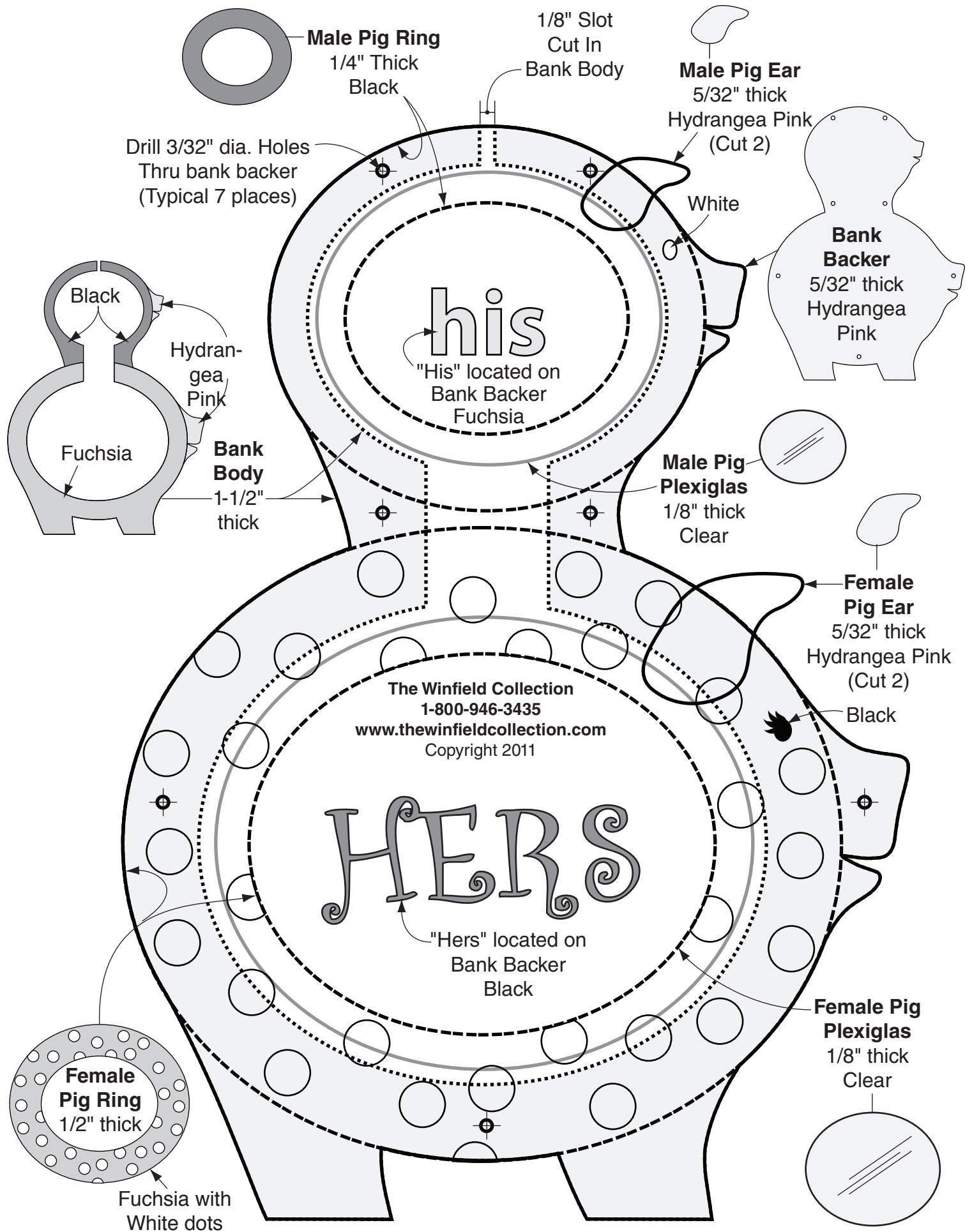
The Winfield Collection

8350 Silver Lake Rd.
Linden, MI 48451

1-800-946-3435

www.thewinfieldcollection.com

Copyright 2011



Male Pig Ring
1/4" Thick
Black

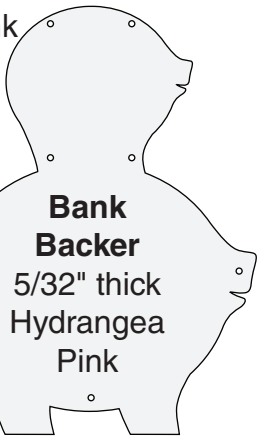
1/8" Slot
Cut In
Bank Body



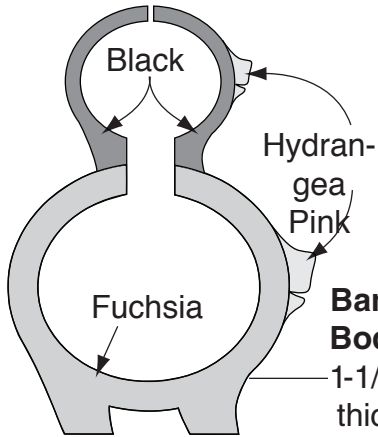
Male Pig Ear
5/32" thick
Hydrangea Pink
(Cut 2)

Drill 3/32" dia. Holes
Thru bank backer
(Typical 7 places)

White



Bank Backer
5/32" thick
Hydrangea Pink



Bank Body
1-1/2" thick

his

"His" located on
Bank Backer
Fuchsia

Male Pig Plexiglas
1/8" thick
Clear



Female Pig Ear
5/32" thick
Hydrangea Pink
(Cut 2)

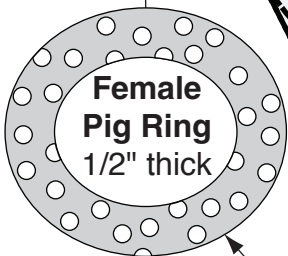
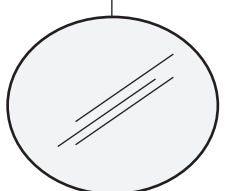
The Winfield Collection
1-800-946-3435
www.thewinfieldcollection.com
Copyright 2011

HERS

"Hers" located on
Bank Backer
Black

Black

Female Pig Plexiglas
1/8" thick
Clear



Female Pig Ring
1/2" thick

Fuchsia with
White dots