

Scare D. Cat Votive Holder

This pattern is presented in two pieces due to space limitations and to keep our pattern prices as low as possible. Cut out and tape the pattern pieces together at the match line before tracing.

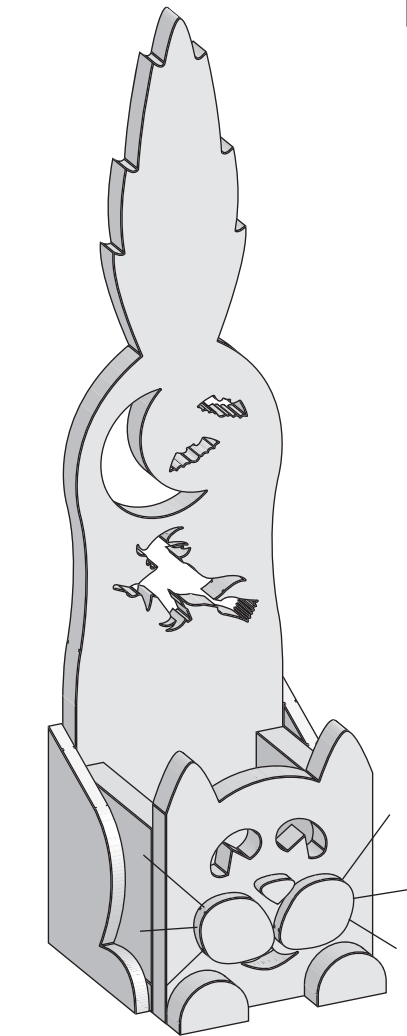
CUTTING: Cut Legs **E**, Cheeks **G** and Nose **F** from 1/4" thick wood. Cut Head **A**, Base **B**, Sides **C**, Body **D** and Paws **H** from 1/2" thick wood. Cover an appropriate size area of wood with Transfer Paper (#CARB). Lay the pattern over the transfer paper and transfer each pieces cut lines onto the appropriate thickness of wood by simply tracing with a pen, pencil or stylus (#STY). Cut out the pieces of this design using a hand held jigsaw (saber saw) with a smooth cutting blade. Cut six 2-1/2" long pieces of of 16 gauge wire for Wire Whiskers **J**. Fill voids and defects in plywood using wood filler. Sand wood filler and all surfaces to desired smoothness. Drill all holes as noted.

ASSEMBLY: (See ASSEMBLY DIAGRAM.)

1. Glue Base **B** between Sides **C** keeping outside edges flush.
2. Glue Head **A** to Assembly keeping side and bottom edges flush.
3. Glue Body **D** to backside of Assembly keeping side and bottom edges flush.
4. Glue Sides **C** inside Body Assembly keeping all outside edges flush.
5. Glue Rear Legs **E** to each side of the Body Assembly keeping back and bottom edges flush.
6. Glue Nose **F**, and Cheeks **G** to Head **A** where shown.
7. Glue Paws **H** to Head **A** keeping bottom and outside edges flush.
8. Glue Wire Whiskers **J** into drill holes in Cheeks **G**.

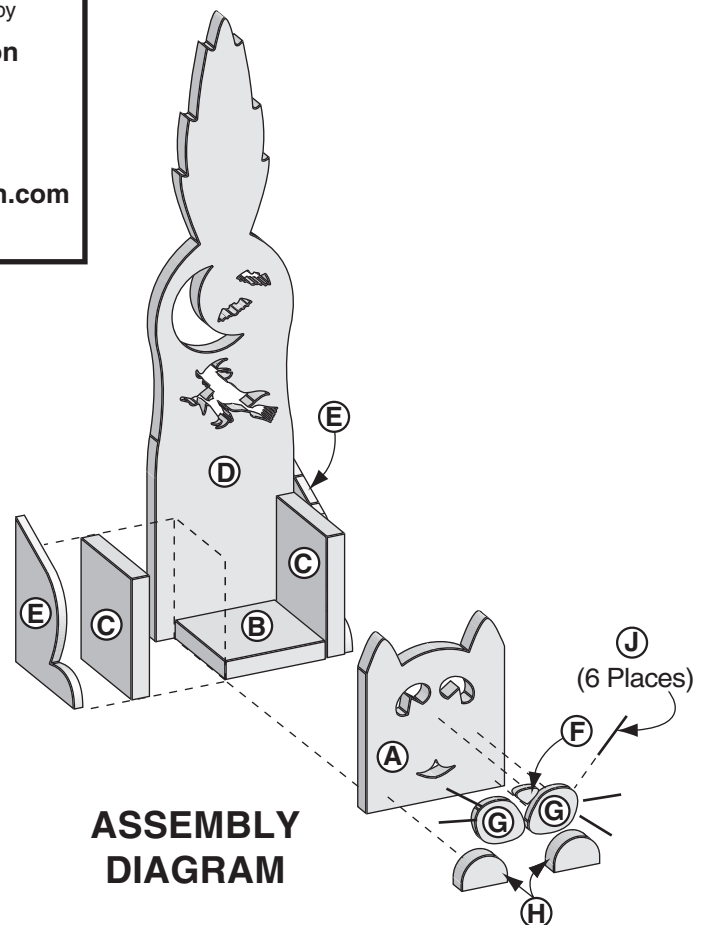
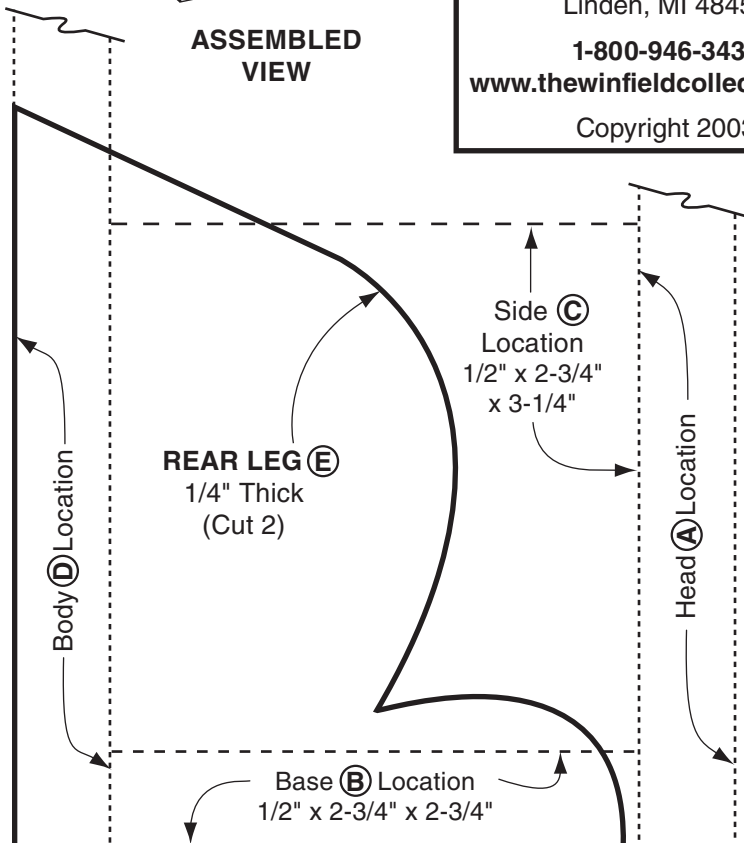
PAINTING: Paint entire project Black and all cut out inside edges the colors noted.

FINISHING: Place votive candle cup behind head and display on shelf or mantle.

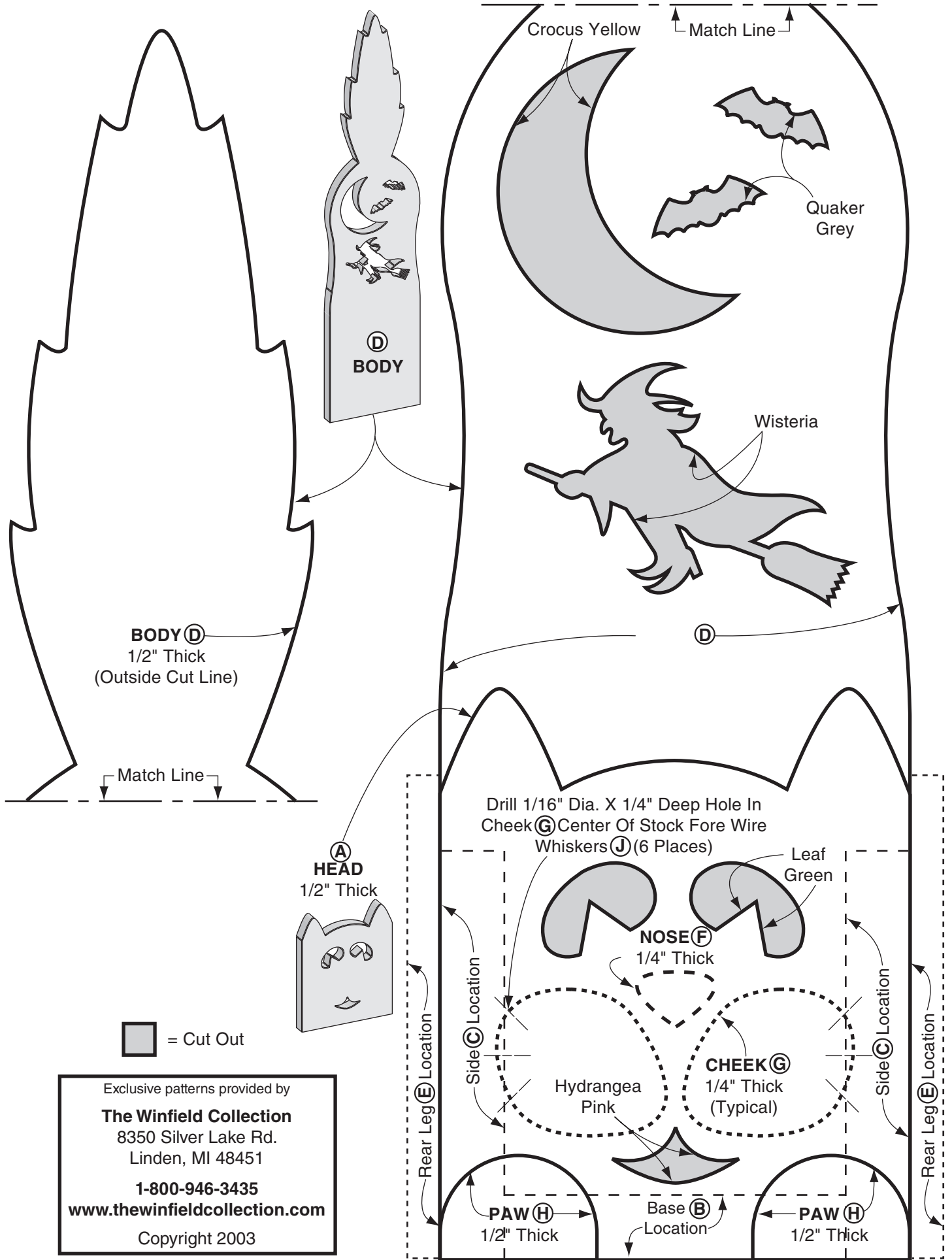


ASSEMBLED VIEW

Exclusive patterns provided by
The Winfield Collection
 8350 Silver Lake Rd.
 Linden, MI 48451
1-800-946-3435
www.thewinfieldcollection.com
 Copyright 2003



ASSEMBLY DIAGRAM



Exclusive patterns provided by

The Winfield Collection

8350 Silver Lake Rd.

Linden, MI 48451

1-800-946-3435

www.thewinfieldcollection.com

Copyright 2003